



RUB

RUHR-UNIVERSITÄT BOCHUM

SOCIAL AND SEMANTIC NETWORK ANALYSIS

EXAMPLES FROM THE HISTORY OF RELIGIONS

FREDERIK ELWERT

SeNeReKo

Semantisch-soziale **N**etzwerkanalyse
als Instrument zur Erforschung von **R**eligions**k**ontakten



SeNeReKo
Centrum für Religionswissenschaftliche Studien
Center for Religious Studies



SPONSORED BY THE



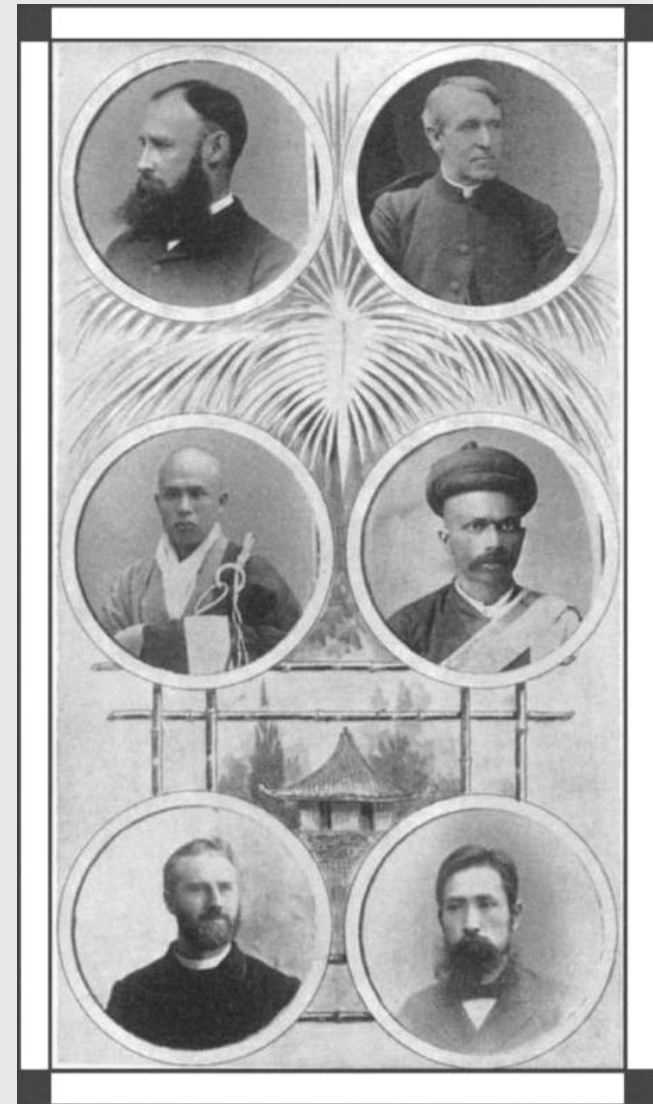
Federal Ministry
of Education
and Research



Dharma, Photo. 2011. 022 Writing the Tipitaka. <http://www.flickr.com/photos/anandajoti/9205327270/>.
User: Ajineko. 2005. Louvre Museum. http://commons.wikimedia.org/wiki/File:Egypte_louvre_116_stele.jpg.

BOX

model of
World Religions

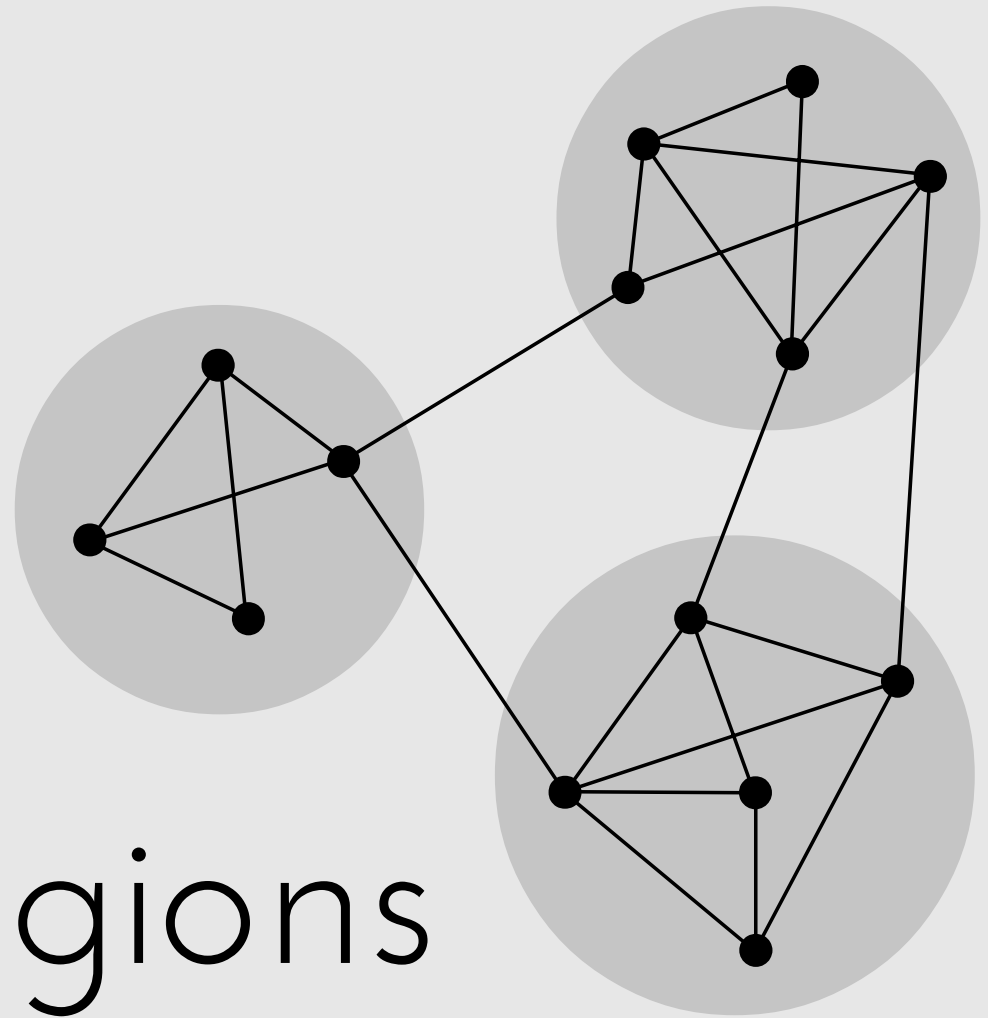


Ziolkowski, Eric Jozef. 1993. A Museum of Faiths: Histories and Legacies of the 1893 World's Parliament of Religions. Atlanta, Ga.: Scholars Press.



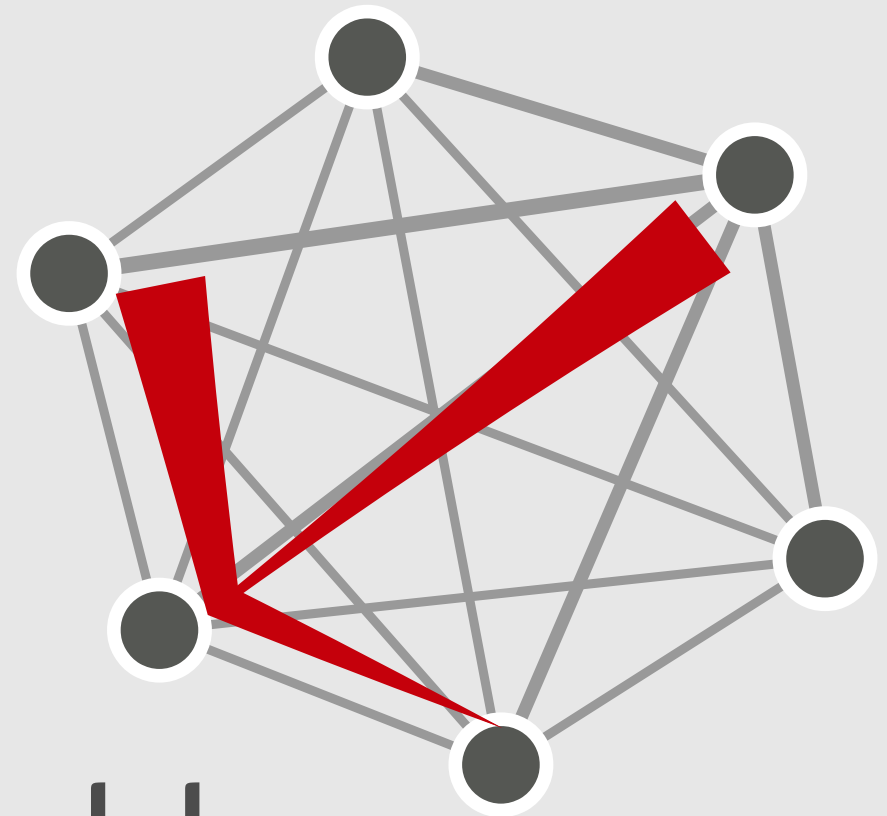
SeNeReKo
Centrum für Religionswissenschaftliche Studien
Center for Religious Studies

doing World Religions



j_ham3-2011. A Sketch of a Small Network Displaying Community Structure, with Three Groups of Nodes with Dense Internal Connections and Sparser Connections Between Groups. Own work. https://commons.wikimedia.org/wiki/File:Network_Community_Structure.svg.

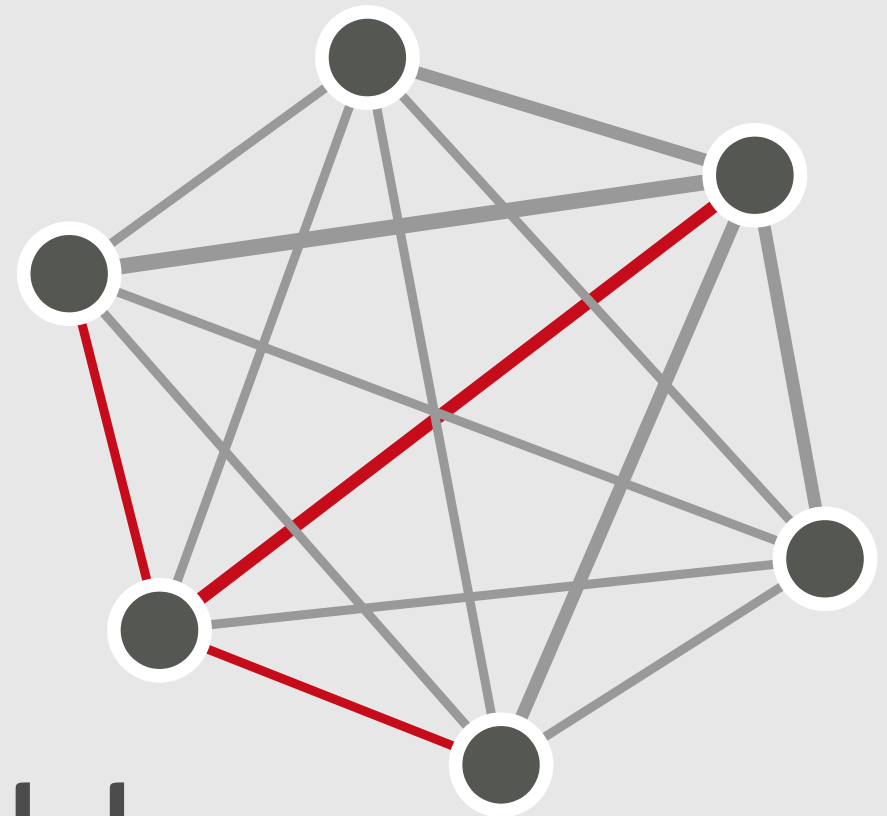
adding
meaning
to networks



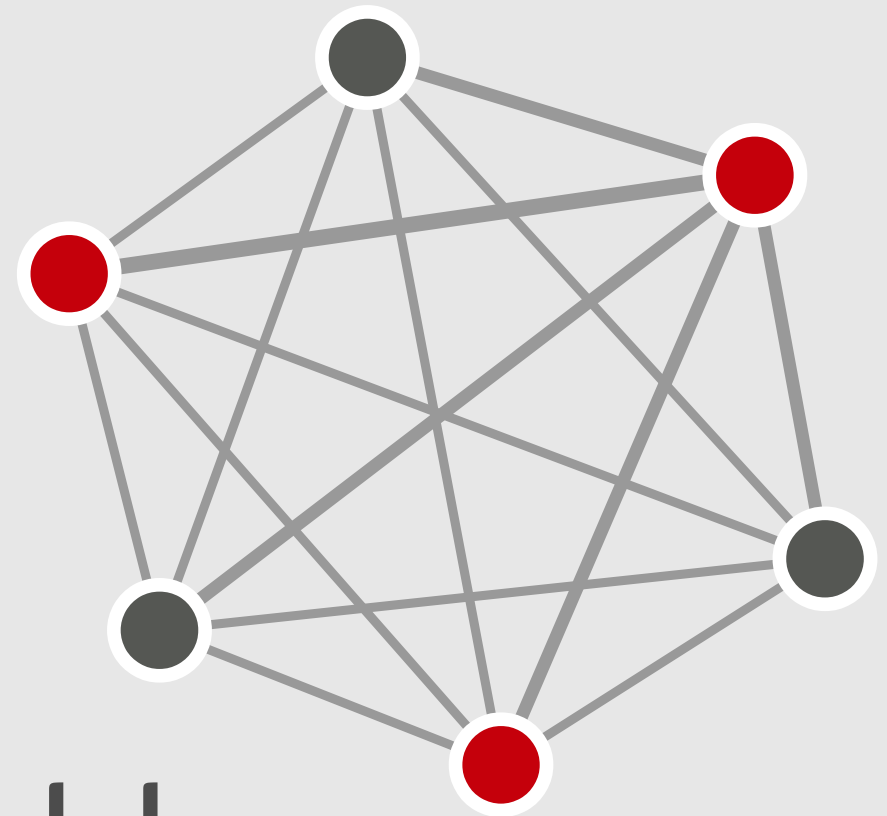
information flow model



SeNeReKo
Centrum für Religionswissenschaftliche Studien
Center for Religious Studies



typed relations model



semantic nodes model

categorize

— *or* —

discover categories ?



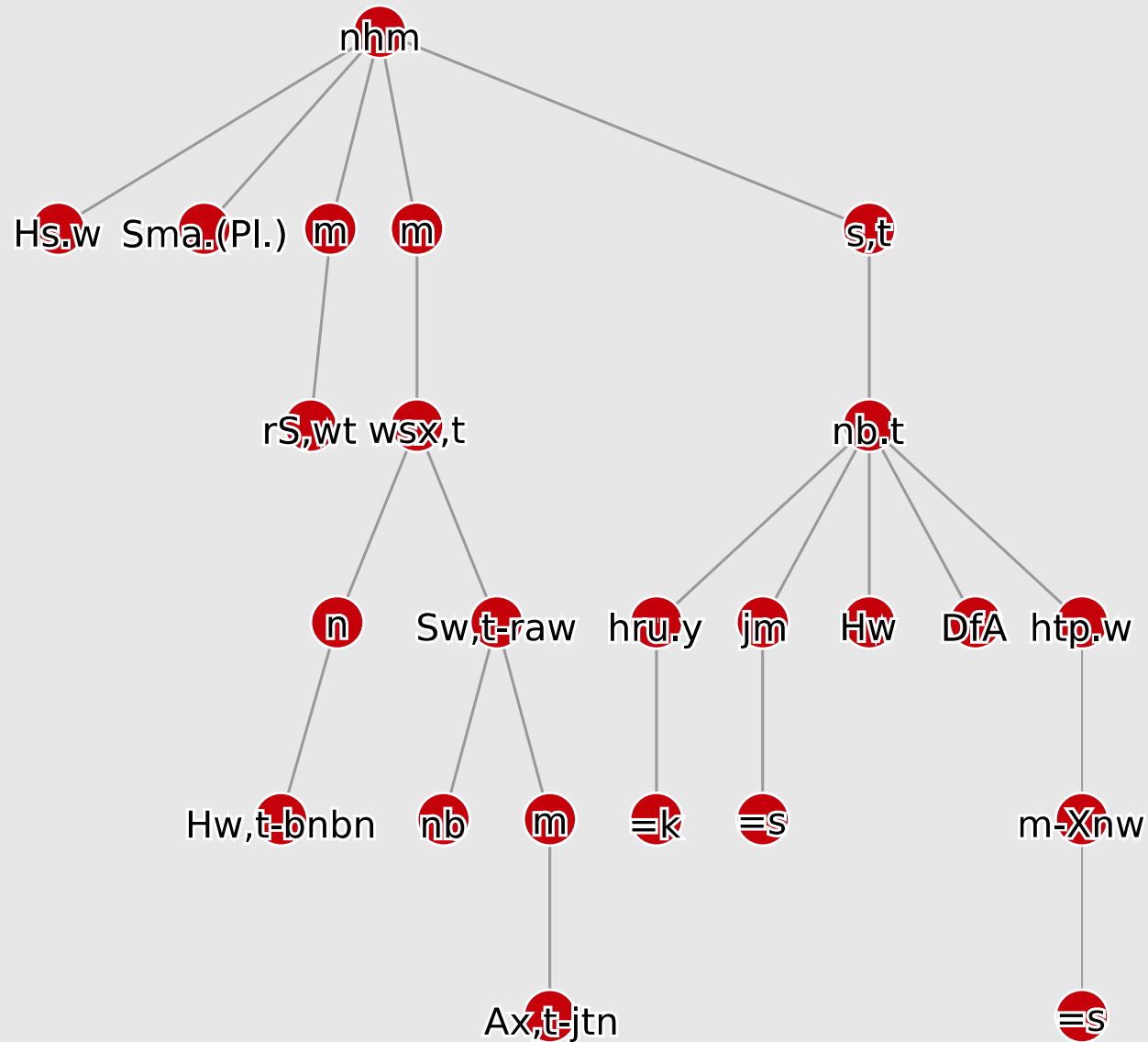
SeNeReKo
Centrum für Religionswissenschaftliche Studien
Center for Religious Studies

Nothing is certain
but ~~death and taxes~~

SYN

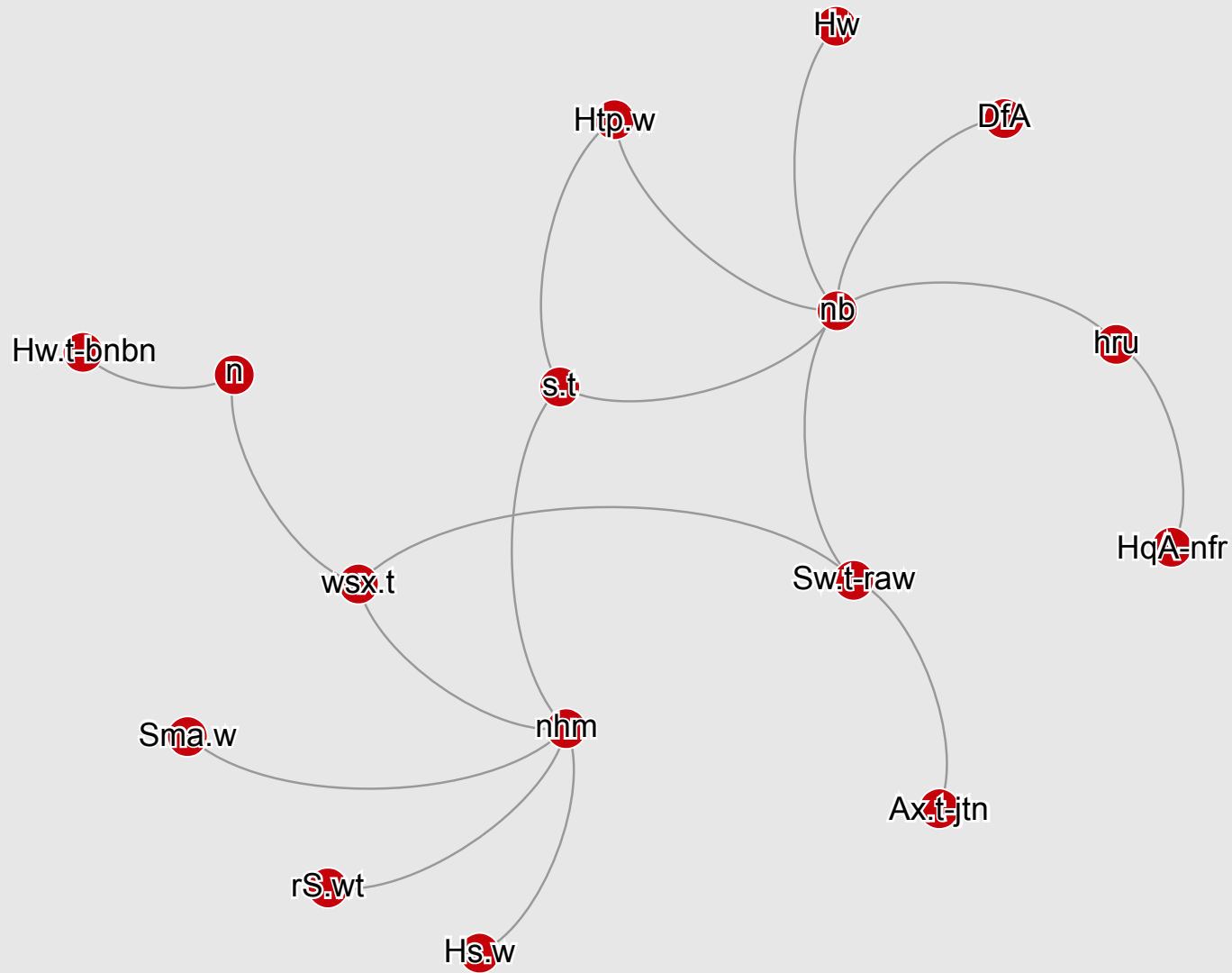


SeNeReKo
 Centrum für Religionswissenschaftliche Studien
 Center for Religious Studies



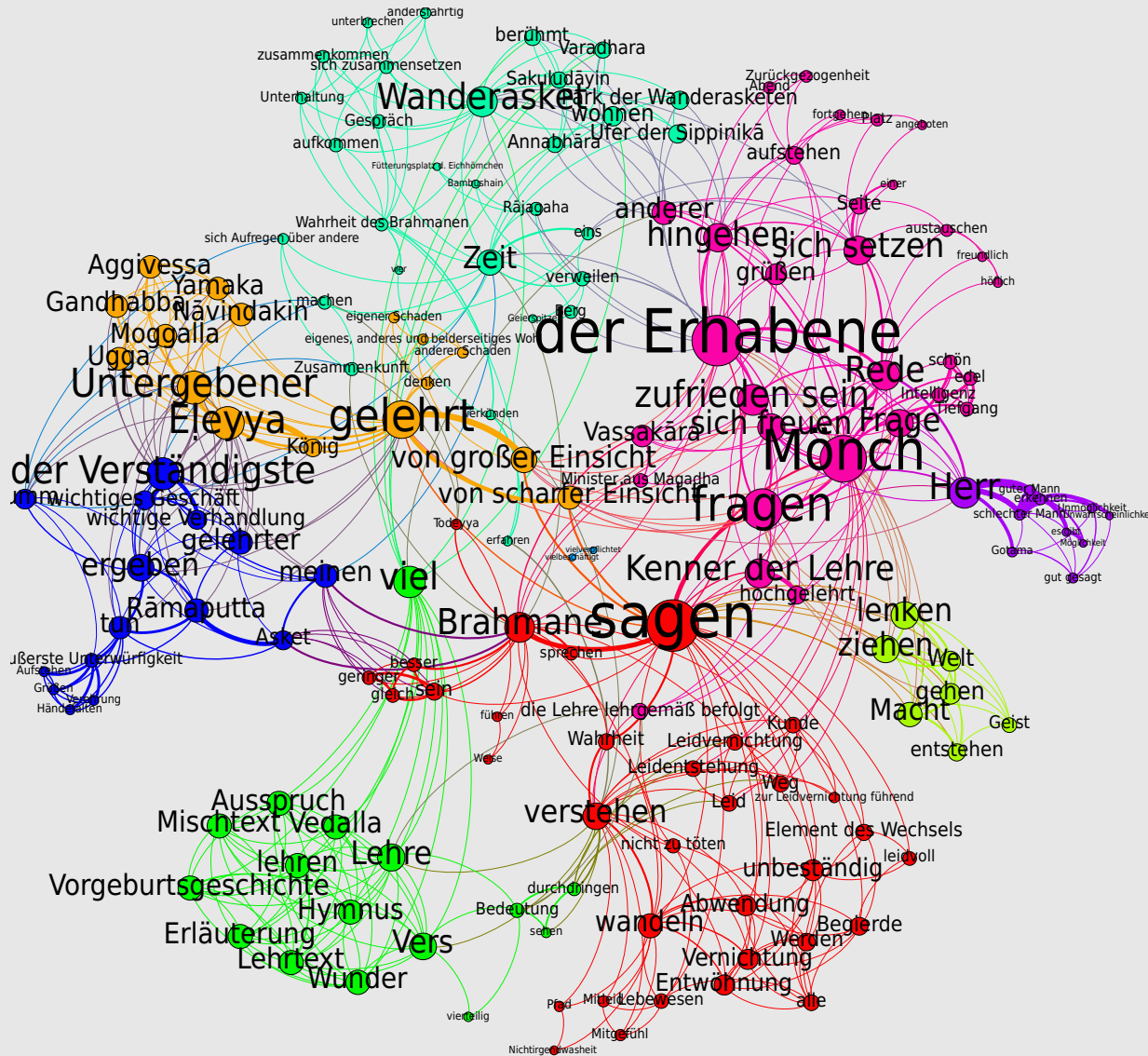


SeNeReKo
Centrum für Religionswissenschaftliche Studien
Center for Religious Studies





SeNeReKo
Centrum für Religionswissenschaftliche Studien
Center for Religious Studies



Thank you!

e-mail: frederik.elwert@rub.de

twitter: [@felwert](https://twitter.com/felwert)